



gLOCAL
EVALUATION WEEK
2021

Innovating Evaluation: Dealing with operational challenges during the COVID-19 crisis

Opening remarks and moderator



Alison Evans
Director-General, IEG



Oscar Calvo-Gonzalez
Director, IEG

During this session we will be using this site for participant interaction: **pollev.com/iegnow**. You will be prompted to start responding.

Panelists



Estelle Raimondo
Senior Evaluator, IEG



Sophia van der Bijl
Evaluation Specialist ,USAID
PPL/LER



Allison Haselkorn
Acting Evaluation Team Lead | Senior
Monitoring and Evaluation Specialist,
USAID PPL/LER



Sven Harten
Deputy Director, Head of
Competence Centre for Evaluation
Methodology, DEval



Agenda

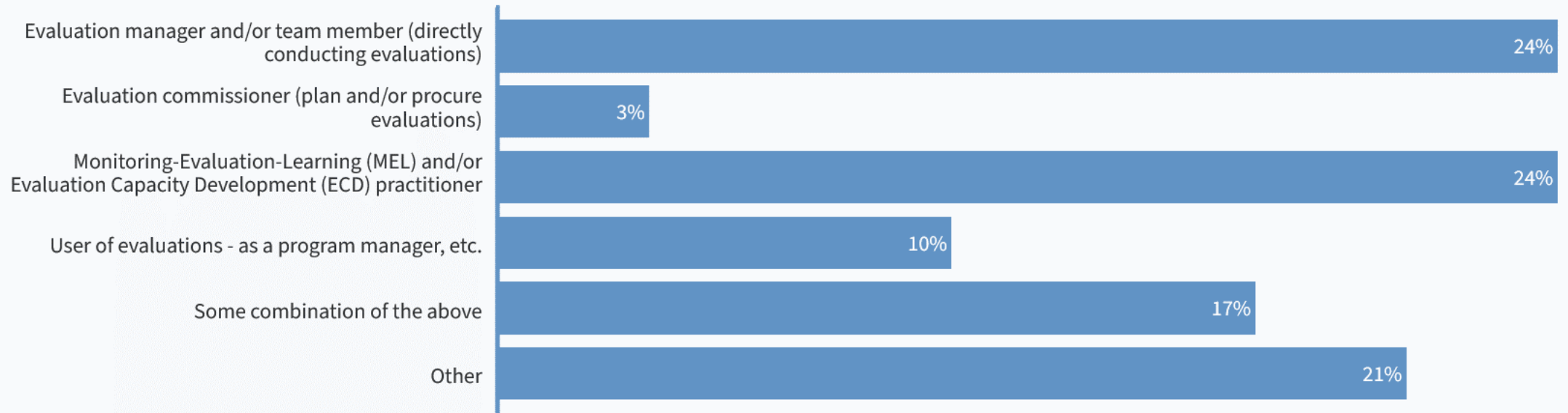
- DEval
- USAID
- WBG-IEG
- Discussion (www.pollev.com/iegnow)

Submit your answer: www.pollev.com/iegnow

Who is in the virtual room with us today? How do you spend MOST of your time related to evaluation?

When poll is active, respond at Pollev.com/iegnow

Who is in the virtual room with us today? How do you spend MOST of your time related to evaluation?





gLOCAL
EVALUATION WEEK
2021

Evaluation in times of Covid-19 and beyond

Sven Harten
Head of Competence Centre for Evaluation
Methodologies /
Deputy Director,
German Institute for Development Evaluation
(DEval)



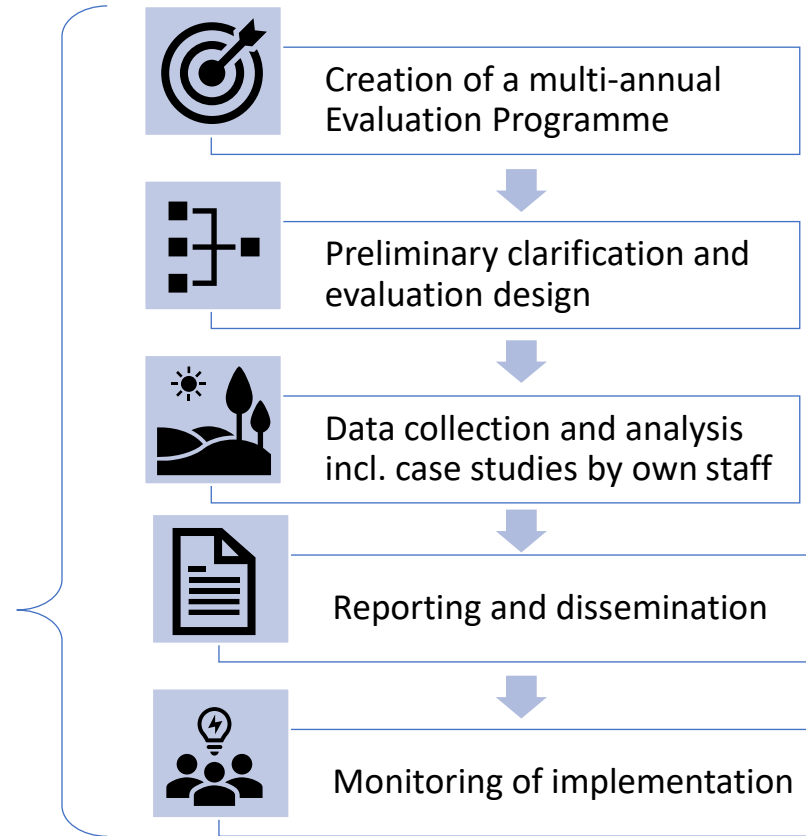
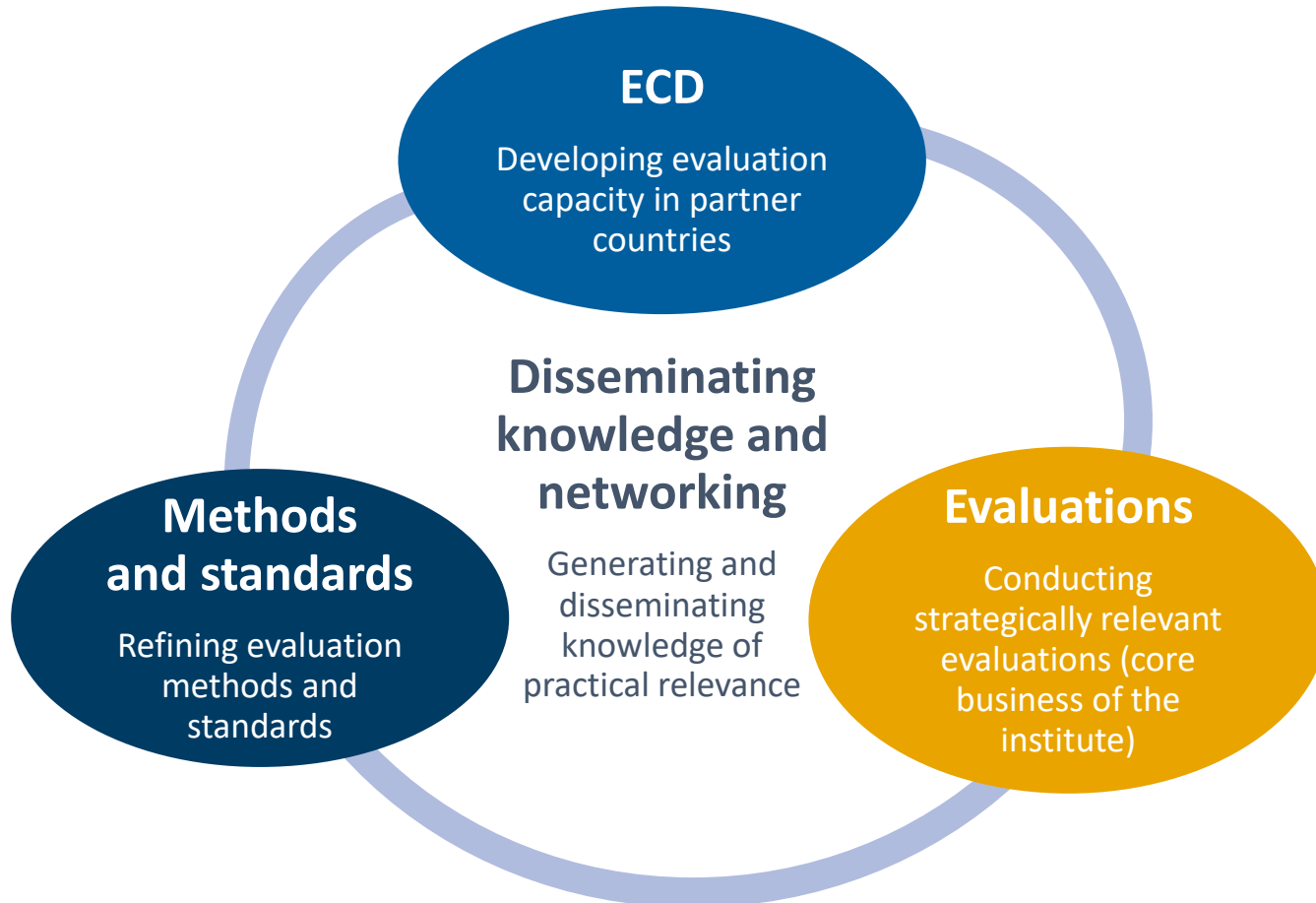
GEI
Global
Evaluation
Initiative

DEval – Some basic features

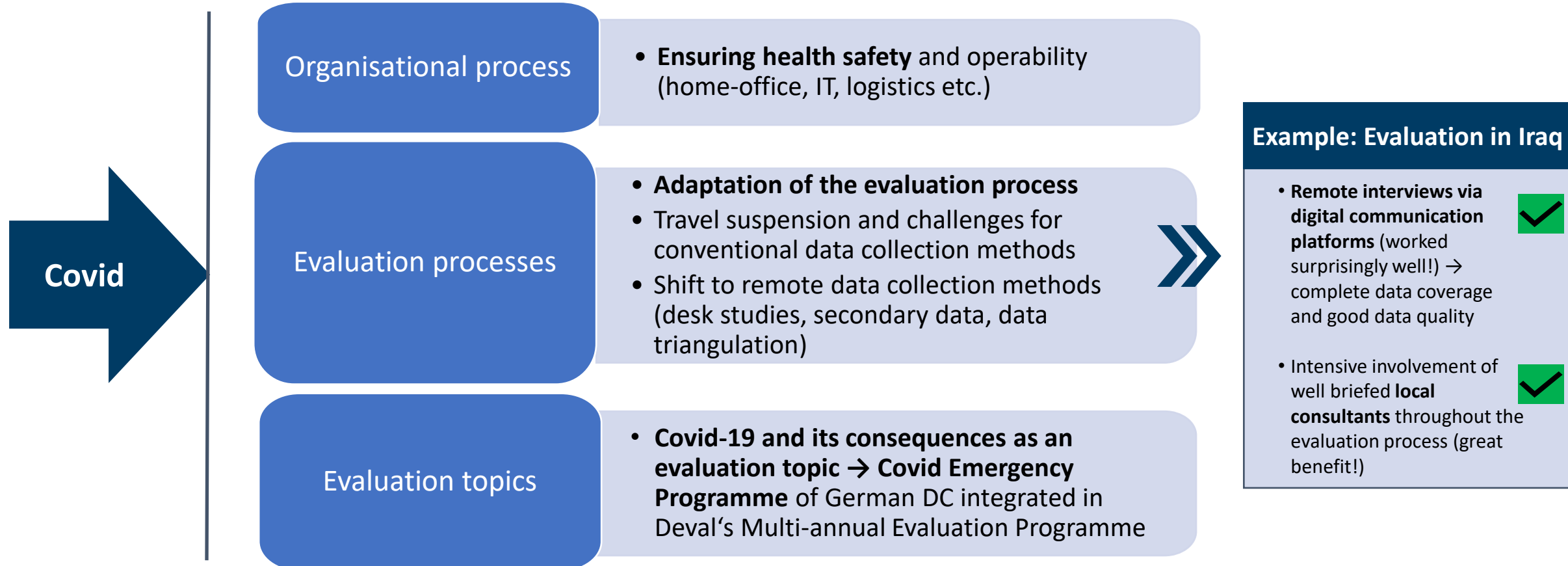
- Founded in November 2012, Bonn
- Evaluation and federal research institute
- Works at the **interface between science, politics and implementing organizations**, considering evaluation as a specific form of **applied research**
- Aims at **providing scientifically robust evidence**
- Pursues **improvements at the strategic level with its evaluatory work**



Fields of activity of DEval

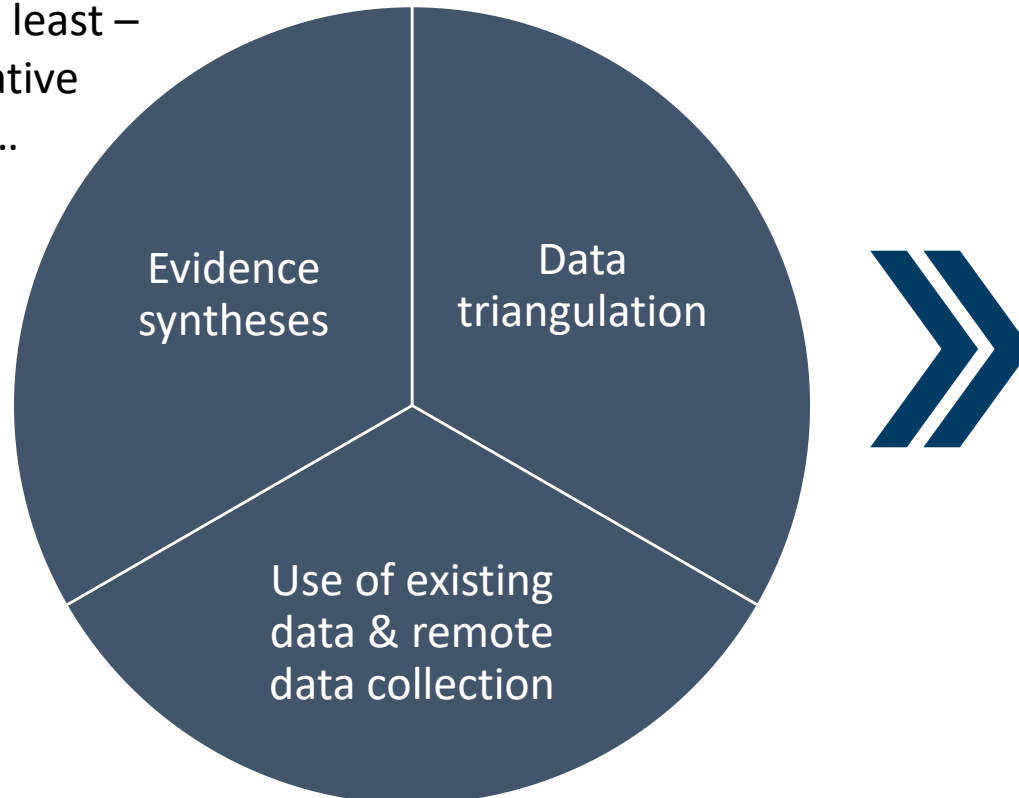


Effects of Covid on DEval's activities



What innovations have been developed or scaled up to mitigate the challenges by the pandemic?

DEval mitigated through – at least – three innovative approaches...



- **Text-mining** approaches in different evaluations, e.g. evaluation of German DC's Human Rights Approach
- Use of **remote data collection** in case studies, e.g. virtual focus group discussions
- **Geo-spatial impact assessment** of irrigation interventions in Mali
- **Evidence gap map (EGM)** on climate change, blended finance and fragile contexts
- **Meta-analysis** on the role of access to credit in the uptake of autonomous adaptation
- **Systematic reviews** for assessing the effectiveness and impacts of adaptation measures in the Water, Agriculture and Coastal Protection sectors
- **Intervention heat map** of climate change adaptation

What might the 'new normal' look like?

New thematic priorities

Stronger focus on: resilience/vulnerability, health, crises, fragility and LLRD, climate change mitigation and adaptation, inequality

Adapted evaluation designs and methods

More data sharing (e.g. Community of Practice on Data in Germany)
More remote data collection methods (e.g. geodata)
More adaptive – scenario-based -evaluation designs
„Greening evaluations“ (e.g. travel less)

More Evaluation Capacity Development

More systemic approach to ECD (incl. regional upscaling)
Stronger focus on country-led evaluations

Increased demand for evidence-based decision making

Public discourse on the Covid-crisis was strongly expert-driven. This also creates a momentum for more evidence-based decision making in DC.

Submit your questions to the panelists.

To submit questions to the panelists, go to: www.pollev.com/iegnow
If you wish, add your name and location.

We will begin collecting questions to address later in the session.



gLOCAL
EVALUATION WEEK
2021



USAID
FROM THE AMERICAN PEOPLE

USAID:

Evaluation under COVID-19

Allison Haselkorn, Acting Evaluation Team Lead
Sophia van der Bijl, Senior Evaluation Specialist

Office of Learning, Evaluation, and Research
Bureau for Policy, Planning, and Learning
(PPL/LER)

GEI
Global
Evaluation
Initiative

Overview: Evaluation at USAID

- Generally decentralized
 - Agency-wide evaluations and studies often run out of PPL/LER
- Most evaluations are external (commissioned/contracted by operating unit)
- Monitoring, Evaluation, Research, and Learning Innovations Program (MERLIN): 4 concepts; cooperative agreement mechanisms



PPL/LER is USAID's leader in evaluation policy & practice

LER Evaluation Team Functions

Policy, Guidance, and Tools

Develop policy and guidance to support the planning, implementation, and use of high-quality evaluation across USAID

Technical Assistance and Capacity Building

Deliver technical assistance and capacity building to support operating units in designing, implementing, and learning from evaluations

Exploration of Evaluation Methods and Approaches

Develop, test, and adapt evaluation approaches that are responsive to USAID's current and future programming and learning needs

Enabling Environment

Strengthen the internal and external enabling environment for the planning, resourcing, and use of evaluations

1. How have evaluation functions adapted to the challenges of collecting and analyzing evaluative evidence in times of COVID-19?

- **Across USAID evaluations:**

- Increased flexibility
 - Procurement
 - Design
 - Implementation
- Increased contracting with local partners and individuals
- Increased remote data collection

- **MERLIN mechanisms:**

- Strategic Program to Analyze Complexity and Evaluate Systems (SPACES-MERL)
- Developmental Evaluation Pilot Activity (DEPA-MERL)
- Rapid Feedback (RF)
- Expanding the Reach of Impact Evaluation (ERIE)

2. What innovations have been developed or scaled up to mitigate these challenges?

- **Across USAID evaluations:**

- Remote monitoring and data collection
- Collaboration
 - Teamwork
 - Data collection

- **MERLIN mechanisms:**

- SPACES: remote deliverables
- DEPA-MERL: remote collaboration
- RF: virtual support; remote data collection
- ERIE: remote data collection



3. What will the 'new normal' look like? In what ways will the pandemic have a lasting influence on evaluation design and implementation?

- Cost efficiency/lower cost
- Adaptive procurement and design
- Remote collaboration
- Remote data collection
- More local partnership
- More evaluations on the pandemic's effects
- MERLIN: more remote everything



Thank you!



USAID
FROM THE AMERICAN PEOPLE



gLOCAL
EVALUATION WEEK
2021

Adapting IEG evaluations under Covid-19

Reflecting on one year of dealing with “Unknown unknowns”

Estelle Raimondo, PhD
Senior Evaluator, Independent Evaluation Group

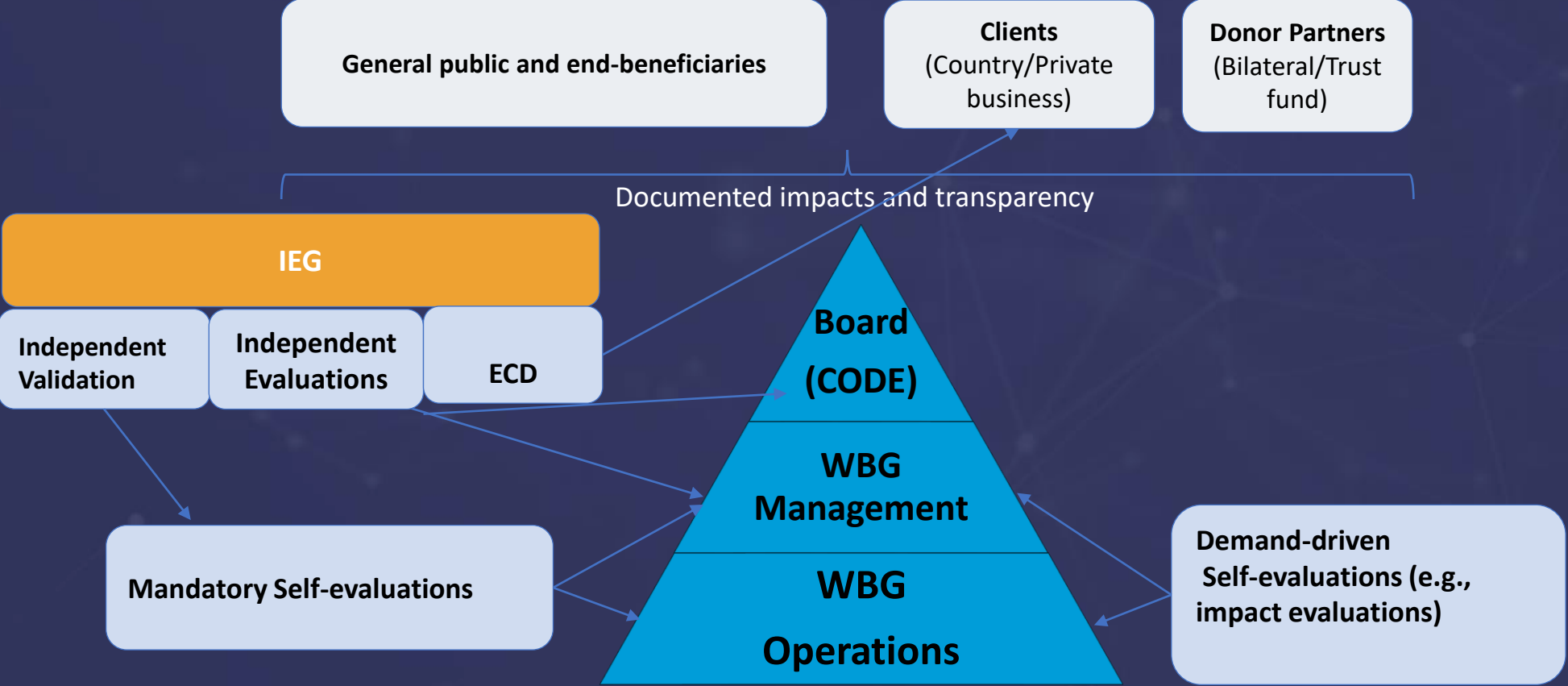


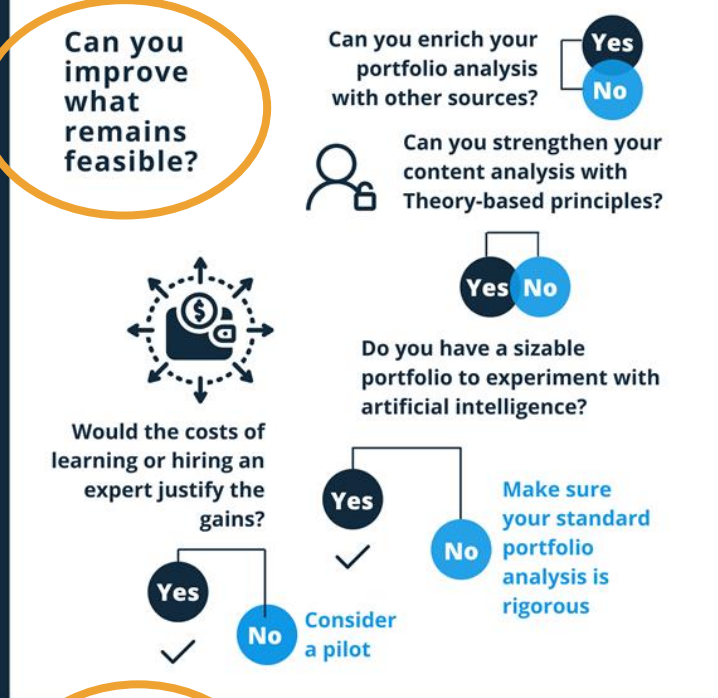
IEG
INDEPENDENT
EVALUATION GROUP

WORLD BANK GROUP
World Bank • IFC • MIGA

GEI
Global
Evaluation
Initiative

IEG within the World Bank Group Evaluation System





How did we set out to adapt?

Adapting what we do

- Putting our users' needs at the forefront:
 - COVID Response – Library, Tools, Evaluation
<https://ieg.worldbankgroup.org/topic/covid-19-coronavirus-response>
- Being (even more) mindful of absorptive capacity
- Engaging in “double loop” learning



IEG
INDEPENDENT
EVALUATION GROUP

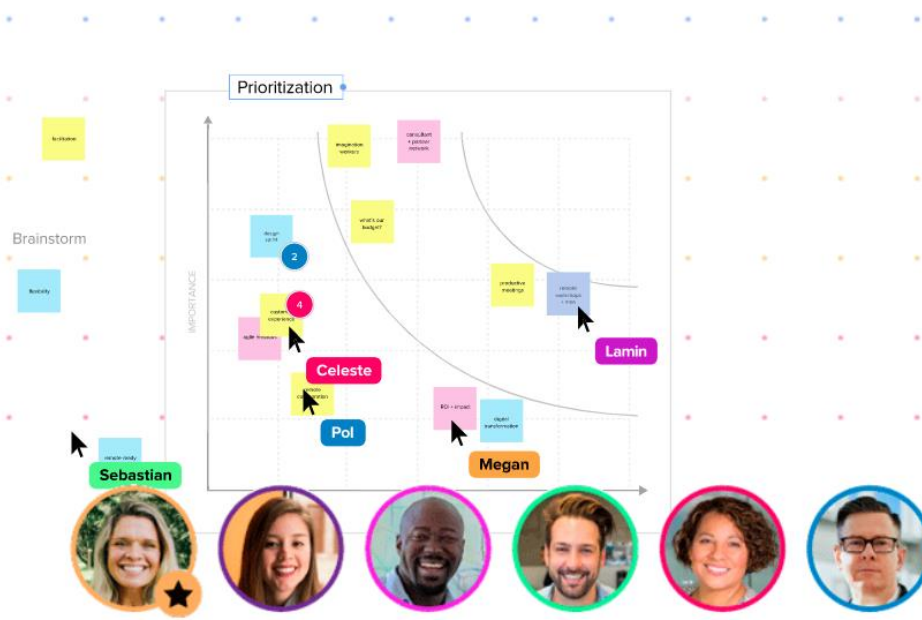
WORLD BANK GROUP
World Bank • IFC • MIGA

- Remote interviewing
- Valuing better local expertise
- Reshaping the “virtual reflexive team”
- “Observing from space”

Can you find ways around what is infeasible?



Example: The “virtual reflexive evaluation team”



Search

Methods: Monthly team meeti... Chat 3 more + Join 18

Jozef Leonardus Vaessen 4/9 10:00 AM
many thanks colleagues

Santiago Ramirez Rodriguez 4/9 10:00 AM
Thank you

Meeting ended 1h 2m 4/9 10:00 AM

Meeting
Recorded by: Thao Thi Phuong ...
47m 36s

Joy Kaarina Butscher 4/9 10:01 AM
great stuff, thanks again Harsh and Joachim!

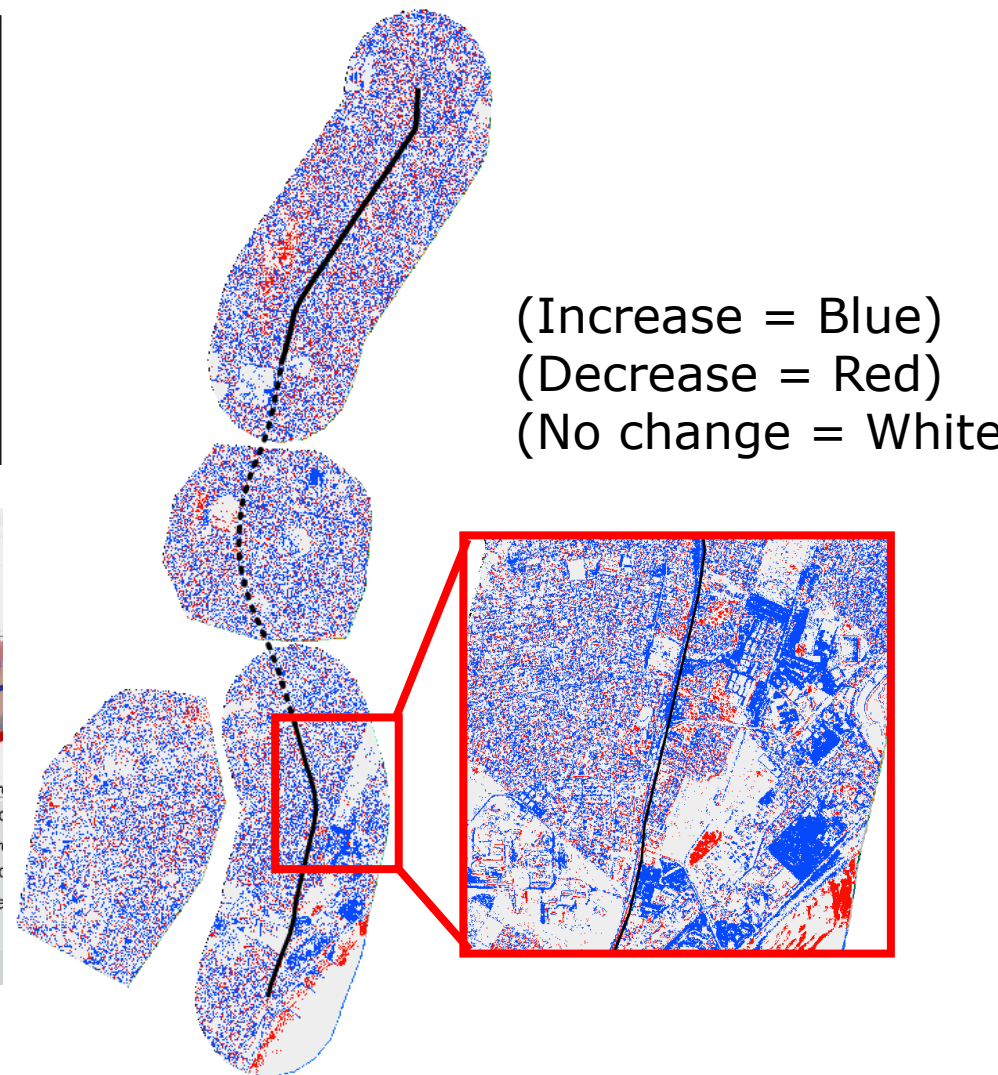
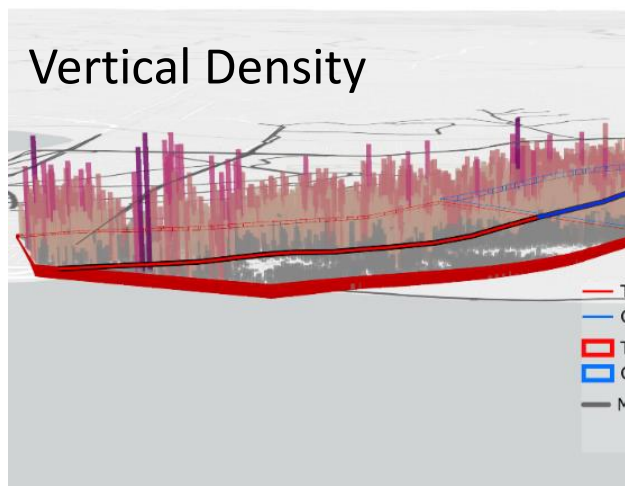
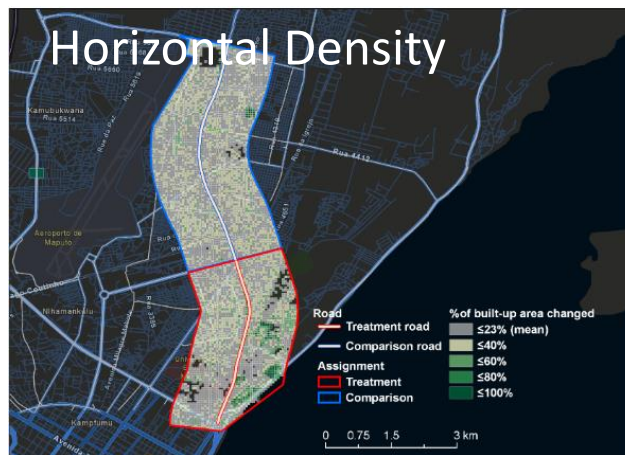
Example: Using ML in geospatial impact assessment

Maputo Municipal Development Program II (2009-17)

Black line:
Road
Supported
by the
Bank

Dotted
line: Road
not
improved

Red Circle
- 2km
buffer
from the
roads



Can you improve what remains feasible?

Can you enrich your portfolio analysis with other sources?

Yes

No

Can you strengthen your content analysis with Theory-based principles?



Yes

No

Do you have a sizable portfolio to experiment with artificial intelligence?

Would the costs of learning or hiring an expert justify the gains?

Yes

No

Make sure your standard portfolio analysis is rigorous

Yes

No

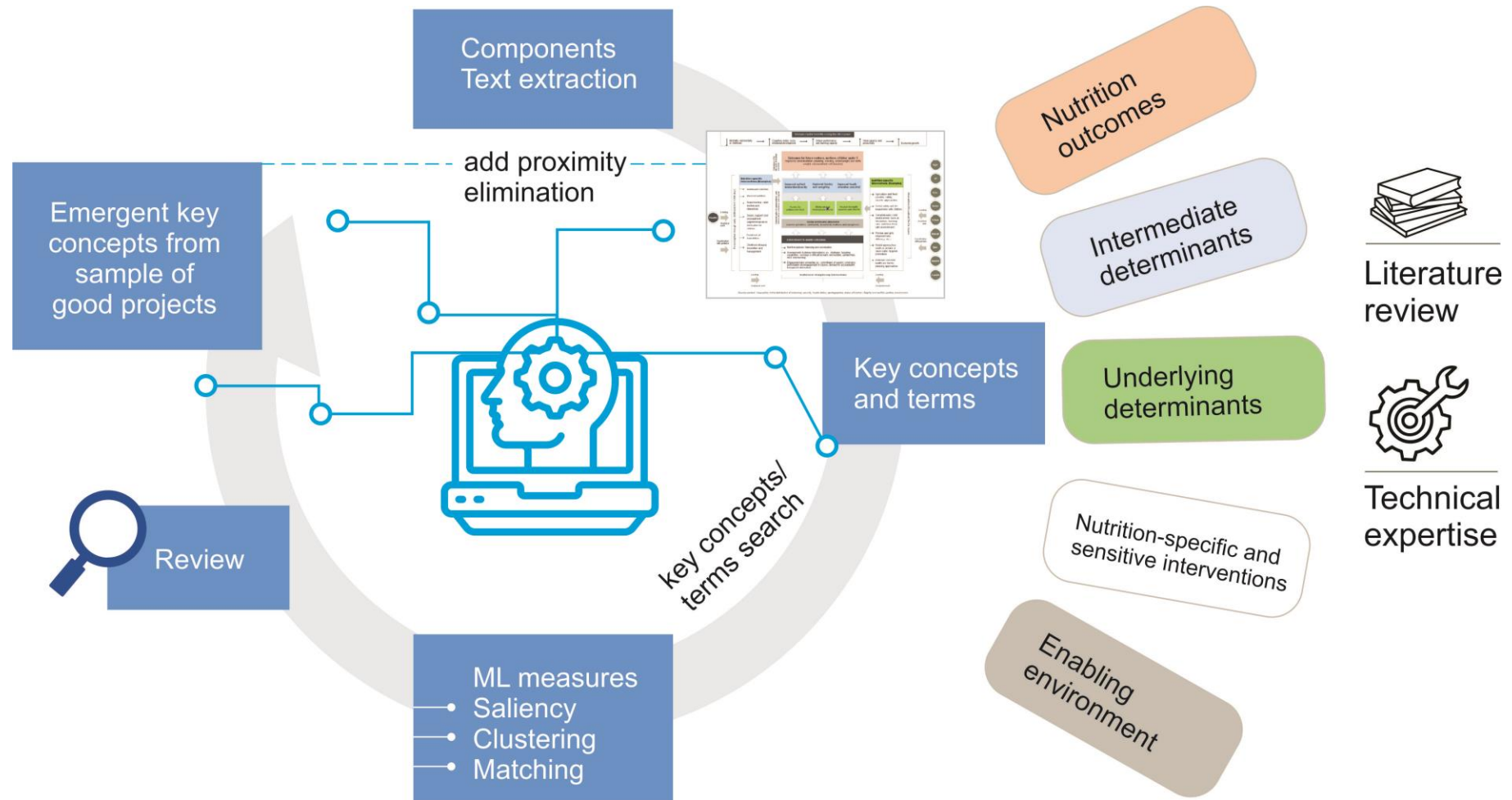


Consider a pilot

- Improving the efficiency and quality of portfolio analysis
- More systematic data analysis in teams through shared tools (NVivo)
- Conducting rapid syntheses

Example : Portfolio identification using ML

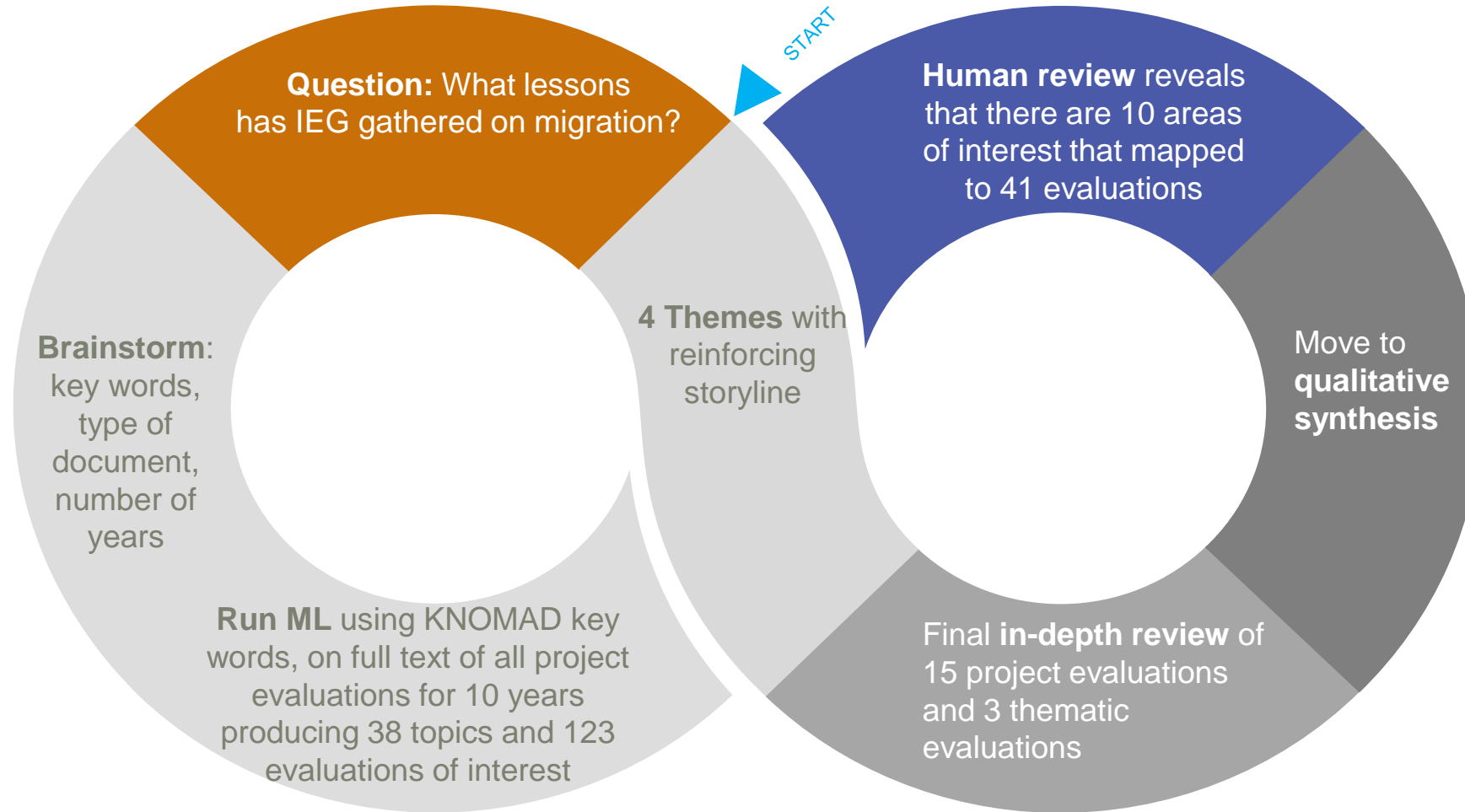
Evaluation of the World Bank's Support to Improving Child Undernutrition and Its Determinants



Source: Independent Evaluation Group; M. Vellez, J. Gold, S. Ramirez

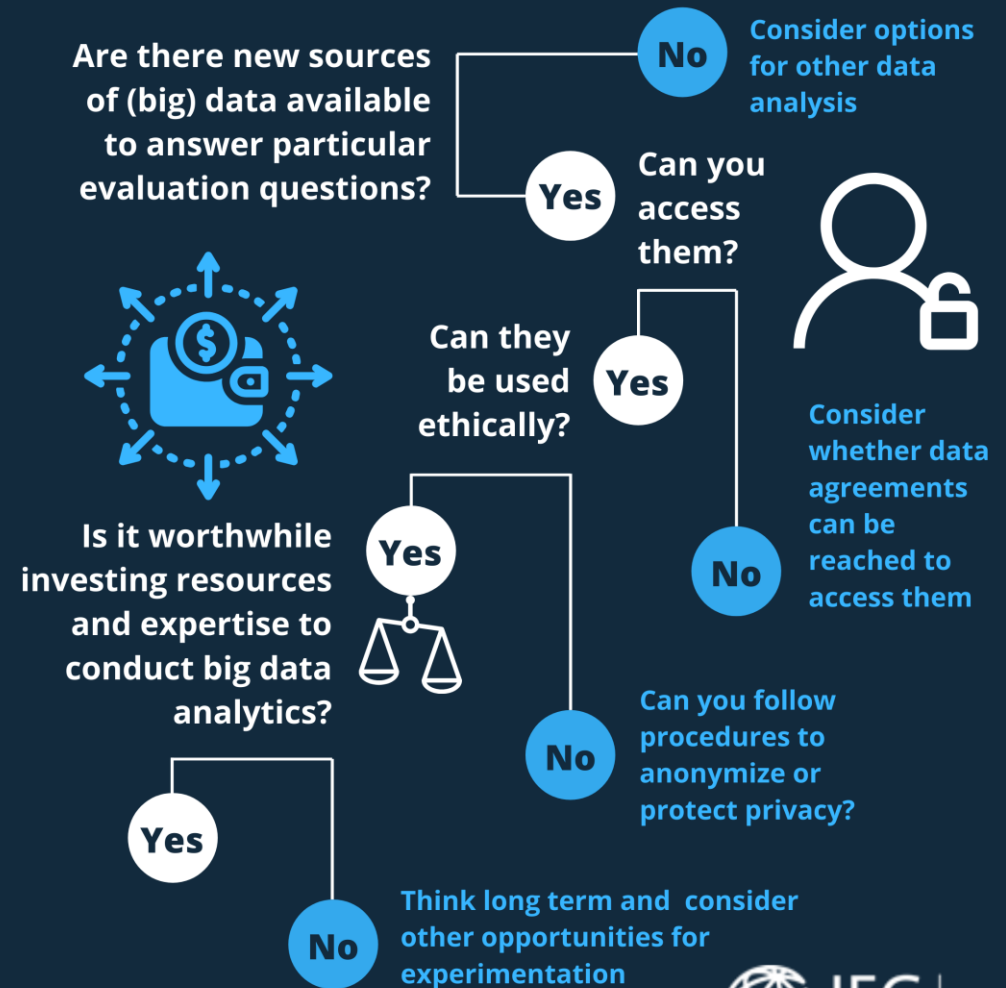
Example : Combining ML and qualitative synthesis

Rapid Synthesis on Migration



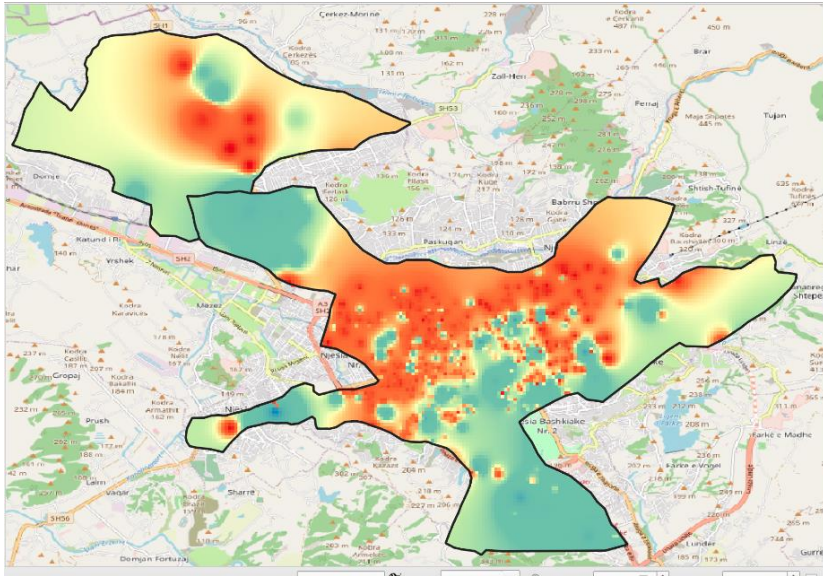
- Accessing alternative (big) data
- Experimenting with social media data

Can you tap into alternative sources of evidence?



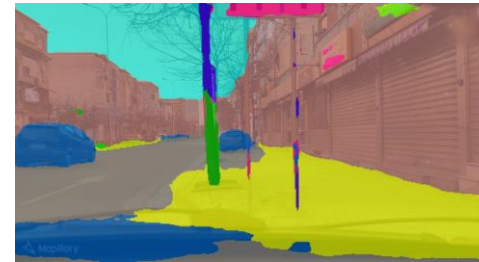
Example : Web Scraping data with local ground-truthing

Impact Assessment of Neighborhood Improvement in Bathore, Albania



Web-Scraping Real-Estate Data:

3,000+ transaction data points were obtained for residential properties (price and property features).



Streetscape Analysis :

Mining high-resolution street level imagery

What will the new normal look like?



Different
ways of
working
together



Embedding
data science
in
evaluation
practice



Outcome
Orientation,
redefining
the role of
evaluation




Evaluating
better
gLOCALLY




Submit your answer: www.pollev.com/iegnow

In one or two words, answer this question: *As we emerge from COVID, I hope in evaluation we can do better at...*

< gLOCAL event, June 2, 2021

 Moderate

 Visual settings

 Edit

 Respond at PollEv.com/iegnow

In one or two words, answer this question: As we emerge from COVID, I hope in evaluation we can do better at...

relevant local people
experts deliver

Submit your questions to the panelists.

To submit questions to the panelists, go to: www.pollev.com/iegnow
If you wish, add your name and location

GEI Global Evaluation Initiative



IEO INDEPENDENT
Evaluation Office
United Nations Development Programme

Independent Office
of Evaluation



IFAD
Investing in rural people



World Food Programme



Canada



**MINISTRY OF
FOREIGN AFFAIRS
OF DENMARK**
Danida



Ministry for Foreign
Affairs of Finland



SWEDISH INTERNATIONAL
DEVELOPMENT COOPERATION AGENCY



BetterEvaluation

clear



Centers for Learning on Evaluation and Results



DEval

GERMAN
INSTITUTE FOR
DEVELOPMENT
EVALUATION



IDEV

Independent Development Evaluation
African Development Bank



**Independent
Evaluation Office**
GLOBAL ENVIRONMENT FACILITY

IPDET

INTERNATIONAL PROGRAM FOR
DEVELOPMENT EVALUATION TRAINING

IsDB



البنك الإسلامي للتنمية
Islamic Development Bank

ove

Oficina de
Evaluación
y Supervisión